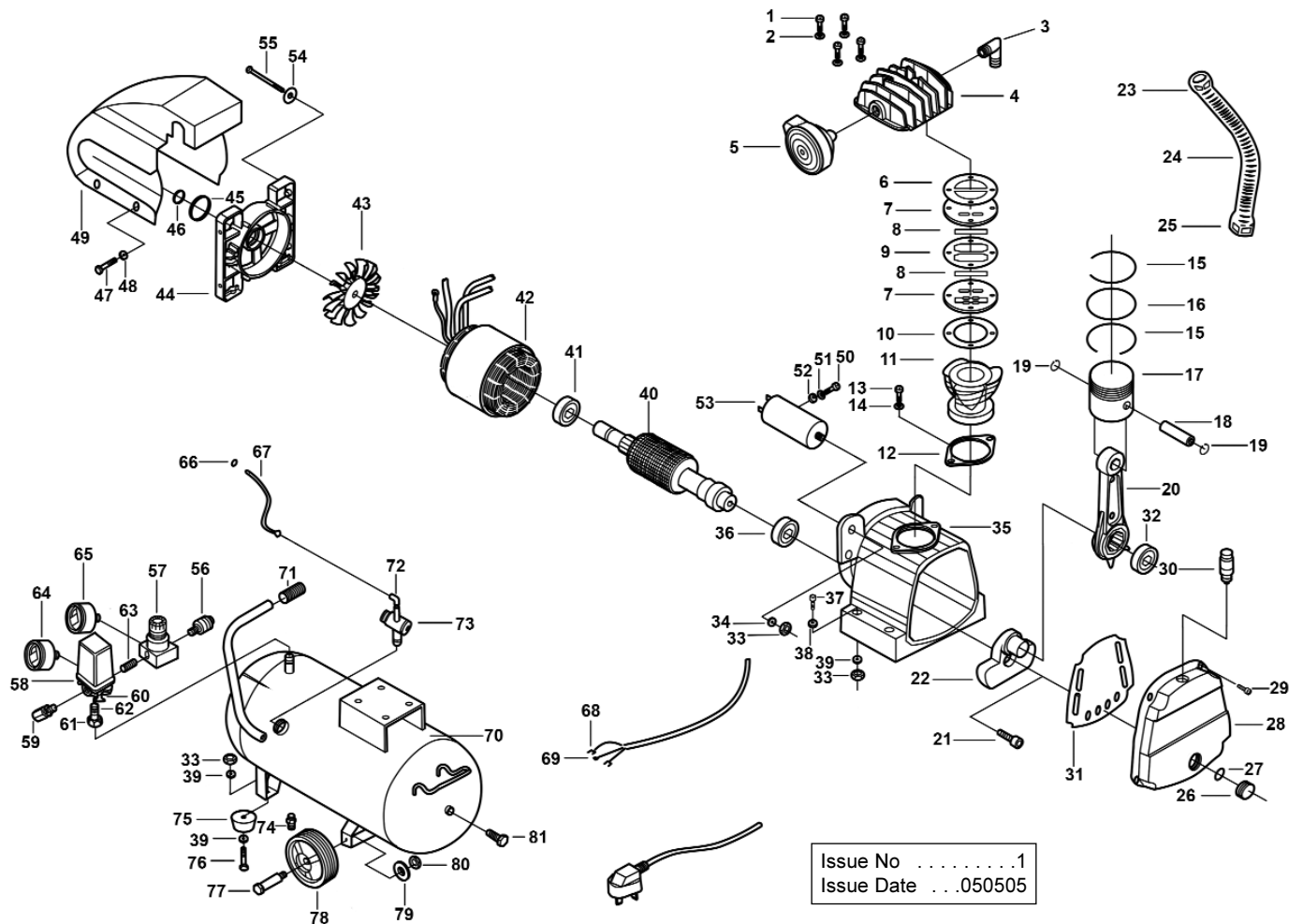


PARTS LIST FOR:
**DIRECT DRIVE
 COMPRESSOR**
 MODEL NO: **SA2250/2.V2**



Issue No1
 Issue Date ...050505

ITEM	PART NO.	DESCRIPTION	ITEM	PART NO.	DESCRIPTION	ITEM	PART NO.	DESCRIPTION
01.	SA2250-V2.01	BOLT	28.	SA2250-V2.28	FRONT CAP	55.	SA2250-V2.55	BOLT
02.	SA2250-V2.02	SPRING WASHER	29.	SA2250-V2.29	BOLT	56.	SA2250-V2.56	AIR COCK
03.	SA2250-V2.03	EXHAUST ELBOW	30.	SA2250-V2.30	BREATHER	57.	SA2250-V2.57	REGULATOR
04.	SA2250-V2.04	CYLINDER HEAD	31.	SA2250-V2.31	GASKET	58.	SA2250-V2.58	PRESSURE SWITCH
05.	SA2250-V2.05	AIR FILTER	32.	SA2250-V2.32	SHAFT SEAL	59.	SA2250-V2.59	SAFETY VALVE
06.	SA2250-V2.06	GASKET	33.	SA2250-V2.33	NUT	60.	SA2250-V2.60	NUT
07.	SA2250-V2.07	VALVE ASS'Y	34.	SA2250-V2.34	WASHER	61.	SA2250-V2.61	CONNECTOR
08.	SA2250-V2.08	VALVE	35.	SA2250-V2.35	CRANKCASE	62.	SA2250-V2.62	GASKET
09.	SA2250-V2.09	GASKET	36.	B/6204-2RS	BEARING	63.	SA2250-V2.63	CONNECTOR
10.	SA2250-V2.10	CYLINDER GASKET	37.	SA2250-V2.37	BOLT	64.	SA2250-V2.64	PRESSURE GAUGE
11.	SA2250-V2.11	CYLINDER	38.	SA2250-V2.38	SPRING WASHER	65.	SA2250-V2.65	PRESSURE GAUGE
12.	SA2250-V2.12	CYLINDER GASKET	39.	SA2250-V2.39	WASHER	66.	SA2250-V2.66	UNLOADING SCREW NUT
13.	SA2250-V2.13	BOLT	40.	SA2250-V2.40	ROTOR	67.	SA2250-V2.67	UNLOADING PIPE
14.	SA2250-V2.14	SPRING WASHER	41.	B/6202-2RS	BEARING	68.	SA2250-V2.69	CABLE CONNECTOR
15.	SA2250-V2.15	GAS RING	42.	SA2250-V2.42	STATOR	69.	SA2250-V2.70	CABLE CONNECTOR
16.	SA2250-V2.16	OIL RING	43.	SA2250-V2.43	FAN	70.	SA2250-V2.72	TANK
17.	SA2250-V2.17	PISTON	44.	SA2250-V2.44	REAR CAP	71.	SA2250-V2.73	HANDLE GRIP
18.	SA2250-V2.18	WRIST PIN	45.	SA2250-V2.45	WASHER	72.	SA2250-V2.74	SMALL ELBOW
19.	SA2250-V2.19	ELASTIC COLLAR	46.	SA2250-V2.46	WASHER	73.	SA2250-V2.75	CHECK VALVE
20.	SA2250-V2.20	CONNECTING ROD	47.	SA2250-V2.47	BOLT	74.	SA2250-V2.76	DRAIN VALVE
21.	SA2250-V2.21	BOLT	48.	SA2250-V2.48	WASHER	75.	SA2250-V2.77	RUBBER FOOT
22.	SA2250-V2.22	CRANK SHAFT	49.	SA2250-V2.49	PUMP HEAD HOUSING	76.	SA2250-V2.78	BOLT
23.	SA2250-V2.23	NUT	50.	SA2250-V2.50	BOLT	77.	SA2250-V2.79	ROLLER SHAFT BOLT
24.	SA2250-V2.24	EXHAUST PIPE	51.	SA2250-V2.51	SPRING WASHER	78.	SA2250-V2.80	WHEEL
25.	SA2250-V2.25	COOLING EXHAUST NUT	52.	SA2250-V2.52	WASHER	79.	SA2250-V2.81	SPRING WASHER
26.	SA2250-V2.26	OIL SIGHT GLASS	53.	SA2250-V2.53	CAPACITOR	80.	SA2250-V2.82	NUT
27.	SA2250-V2.27	OIL SIGHT GLASS RING	54.	SA2250-V2.54	SPRING WASHER	81.	SA2250-V2.83	CASING CAP



Sole UK Distributor, Sealey Group, Bury St. Edmunds, Suffolk.

01284 757500

01284 703534



www.sealey.co.uk



sales@sealey.co.uk